

Reindeer Hat

Gauge

5 stitches = 1"

Sizes:

Small (Medium, Large)
18" (21" 24")

Yarn, Needles and Notions

100(120, 150) yards of Red (Jade Sapphire Mongolian Cashmere 6ply) MC
75-100 yards of Brown (Cashmere Elite) CC1
50-75 yards of Blue (Cashmere Elite) CC2
50-75 yards of White (Cashmere Elite) CC3
US 6 (4mm) 16" circular knitting needle
US 6 (4mm) set of 5 double pointed needles
Darning needle
Stitch Marker

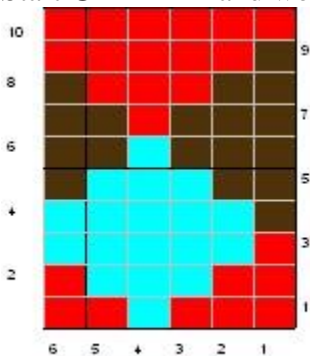
Pattern

With MC, cast on 96 (106, 120) stitches, place marker and join round taking care not to twist stitches.

Round 1: *k1, p1 repeat from * across round.
Repeat round 1 for 1"

Work 3 rounds in stockinette stitch

Start **CHART I** and work across rounds for 10 rounds.



With MC work 0 (2, 3) rounds even

Start **CHART II** and work across rounds

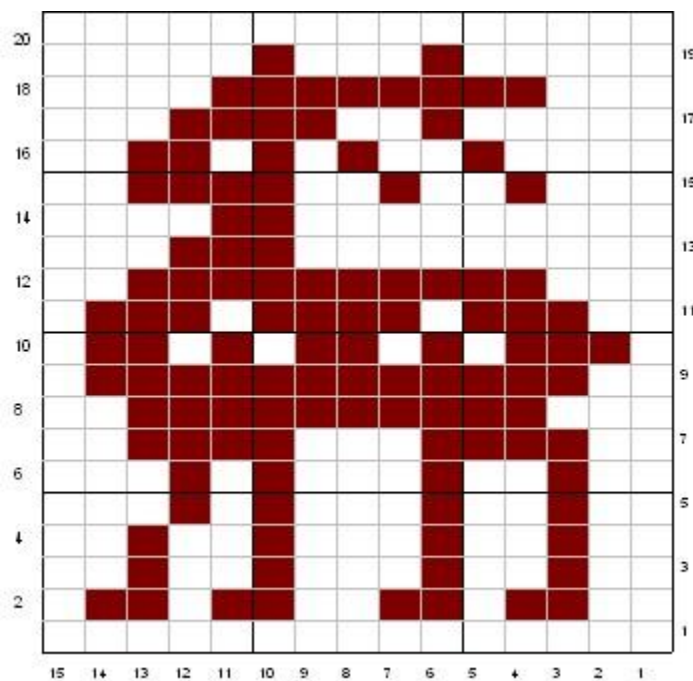
As follows:

SMALL: With MC, K3, Work chart 6 times, K3

MEDIUM: With MC K1, Work chart 7 times

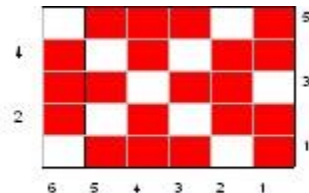
LARGE: Work Chart 8 times across round.

NOTE: colors are RED(MC) AND BROWN (CC1) for this section



With MC work 0(2, 3) rounds

Work **CHART III** for 6 rounds



Continue even in MC until Hat Measures 6" (7 1/2" 9")

Decrease Cap:

Round 1: * k2, k2tog repeat from * across round to last 0 (2,0) stitches Knit.

Round 2: knit

Round 3: * k1, k2tog repeat from * across round to last 0 (2, 0) stitches, knit

Round 4: Knit

Round 5: k2tog across round

Round 6: Knit

Round 7: K2tog across round and pull thread thru live stitches, pull tight and secure.

DESIGNED BY MARIE CONNOLLY

Copyright 2008

For personal use only.